



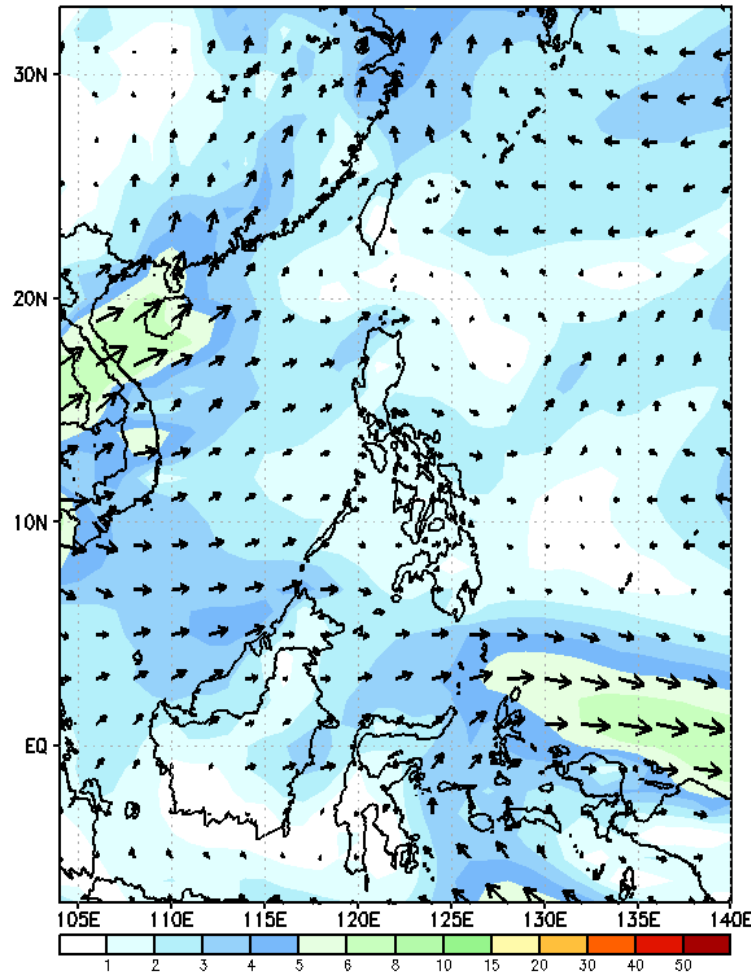
Week 1 & Week 2 Forecast for the Philippines using GEFS Model



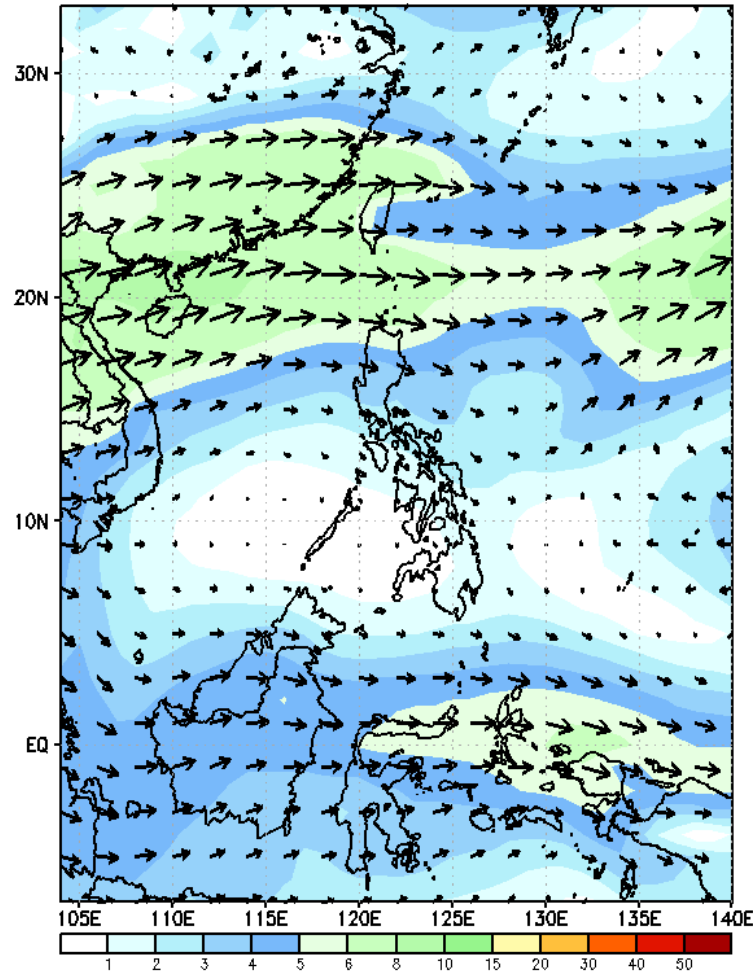
GEFS Week-1 Forecasts: Wind Forecast

Week 1: May 12-18, 2023

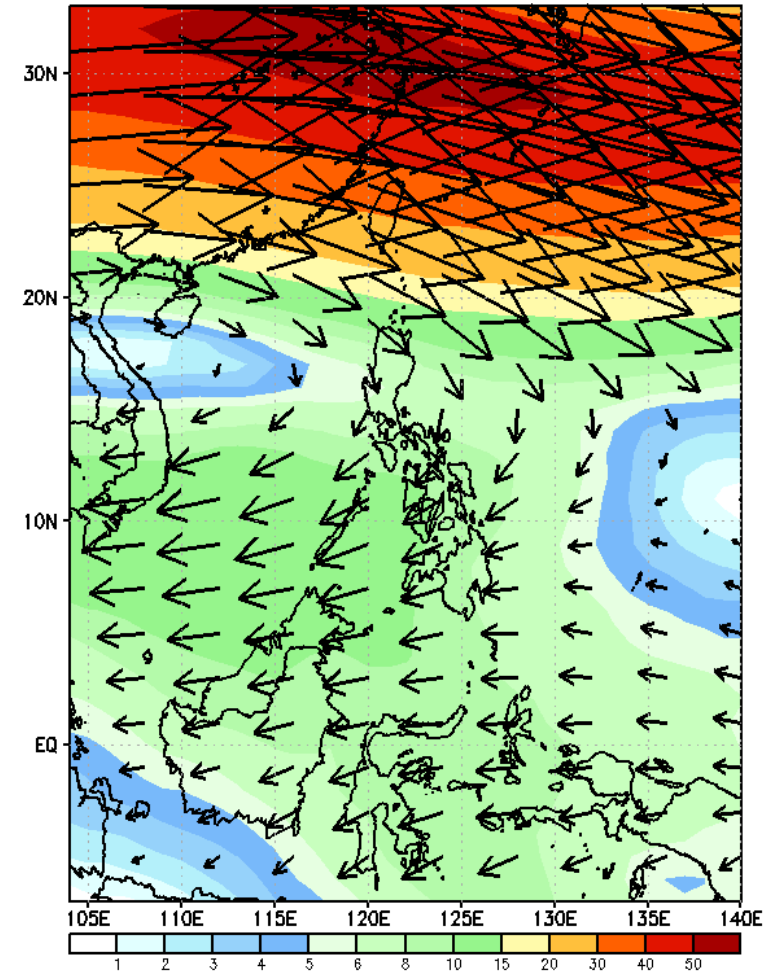
GEFS Week-1 850-hPa Wind Total
Valid: 20230512 - 20230518



GEFS Week-1 700-hPa Wind Total
Valid: 20230512 - 20230518



GEFS Week-1 200-hPa Wind Total
Valid: 20230512 - 20230518



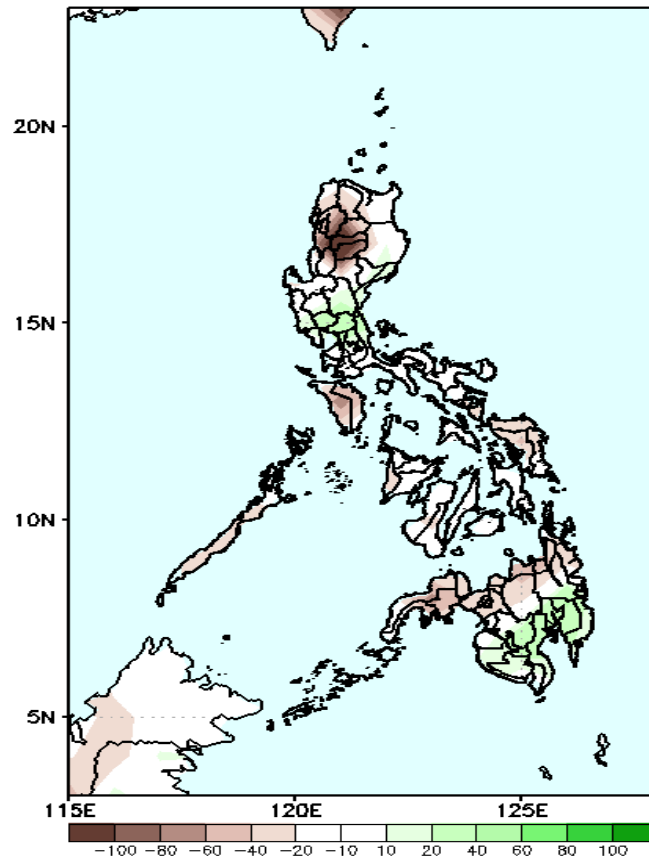
Weak westerlies is forecasted to prevail over the eastern sections of the country. Easterlies is forecasted to affect the eastern section of Mindanao during the forecast period.

Precipitation Anomaly and Exceedance Probability > 25/50 mm

- Very high probability
- High Probability
- Moderate Probability
- Low Probability

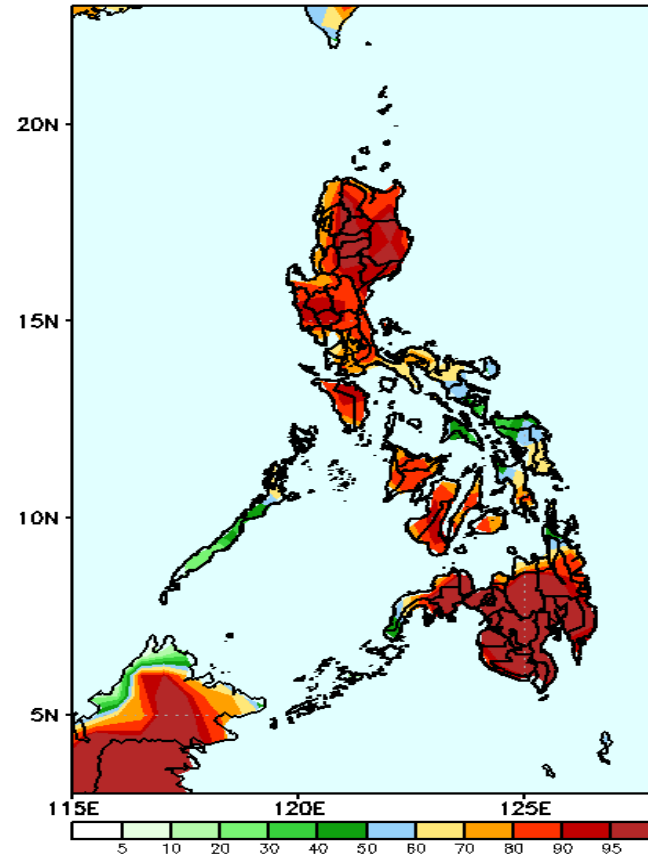
Week 1: May 12-18, 2023

GEFS Week-1 Precip Anomaly
Valid: 20230512 - 20230518



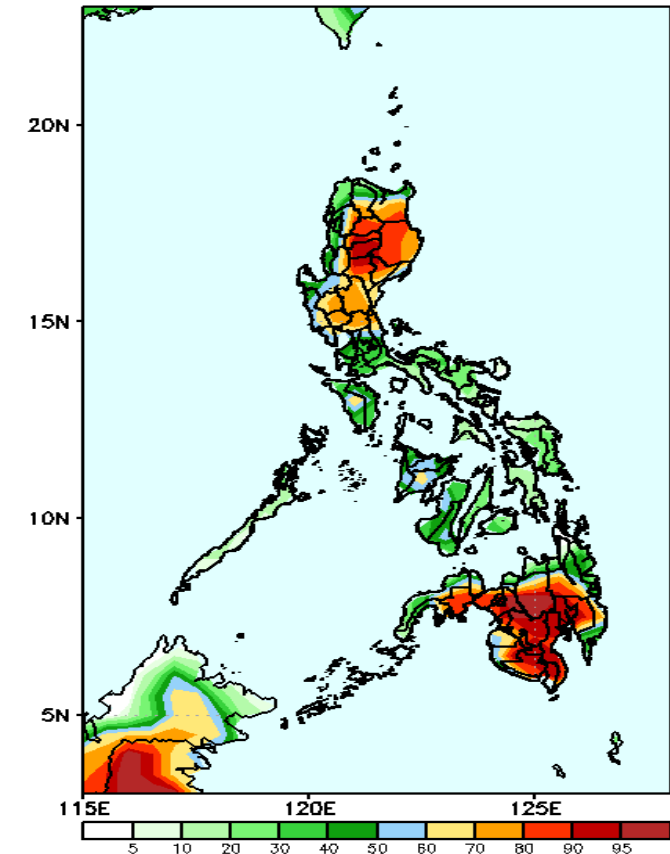
Rainfall deficit of more than 100mm is expected in Kalinga, Mt. Province, Ifugao, Abra & Ilocos Sur; 40-80mm for the rest of the country except in some areas Central Luzon and southern Luzon where 20-50mm increase of rainfall is more likely during the forecast period.

GEFS Week-1 Exceedance Prob. > 25mm
Valid: 20230512 - 20230518



High to a very high probability to exceed 25mm of rainfall over most parts of the country except for a moderate likelihood in Southern Palawan, Masbate, Sorsogon, Catanduanes, Northern Samar, Samar, Surigao del Norte, and western portions of BARM and Zamboanga Peninsula.

GEFS Week-1 Exceedance Prob. > 50mm
Valid: 20230512 - 20230518



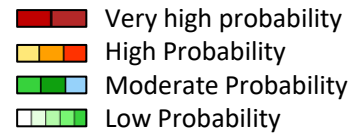
Moderate to high probability to exceed 50mm of rainfall over most parts of northern and Central Luzon, Iloilo, Mindanao, Negros Occidental while low to moderate likelihood over the rest of the country.

yong
GASA

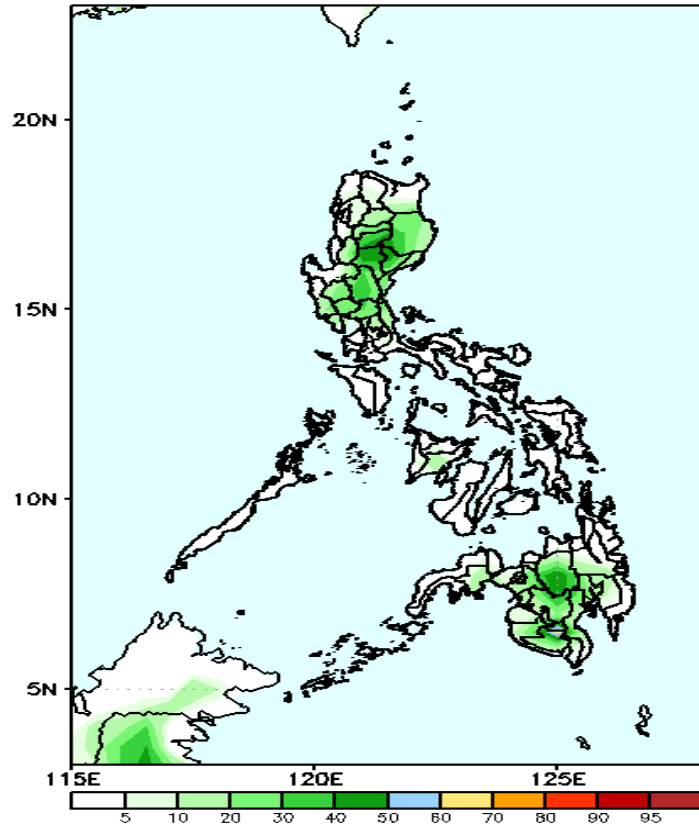


Exceedance Probability > 100/150/200 mm

Week 1: May 12-18, 2023

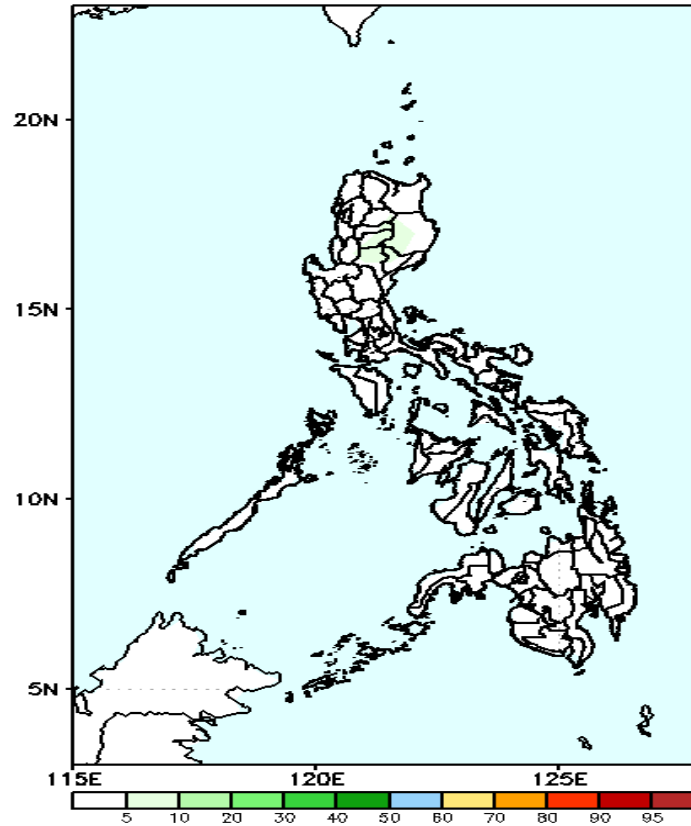


GEFS Week-1 Exceedance Prob. > 100mm
Valid: 20230512 - 20230518



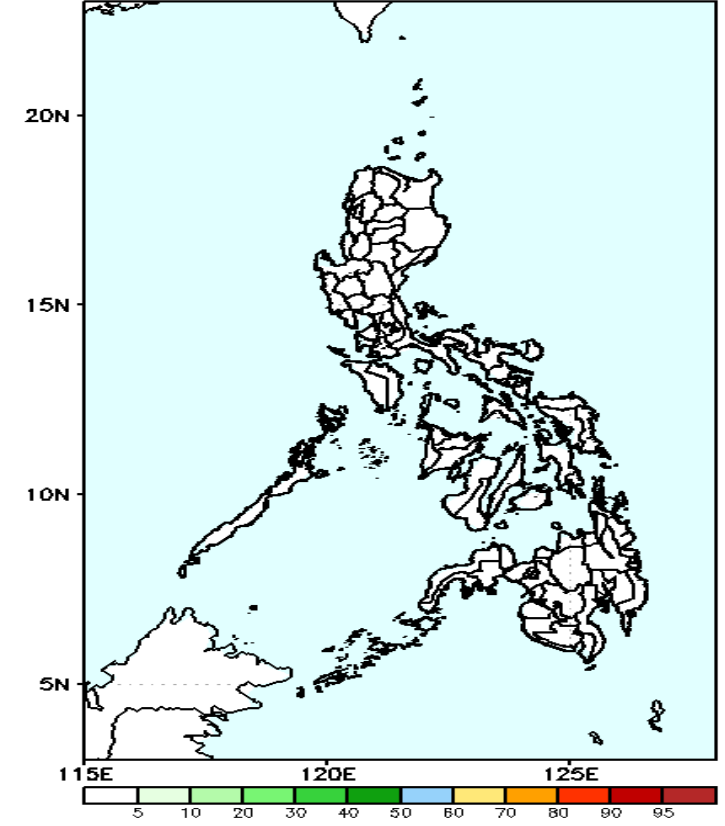
Low to probability to exceed 100mm of rainfall across the country.

GEFS Week-1 Exceedance Prob. > 150mm
Valid: 20230512 - 20230518



Low probability of rainfall to exceed 150mm in most parts of the country during the forecast period.

GEFS Week-1 Exceedance Prob. > 200mm
Valid: 20230512 - 20230518

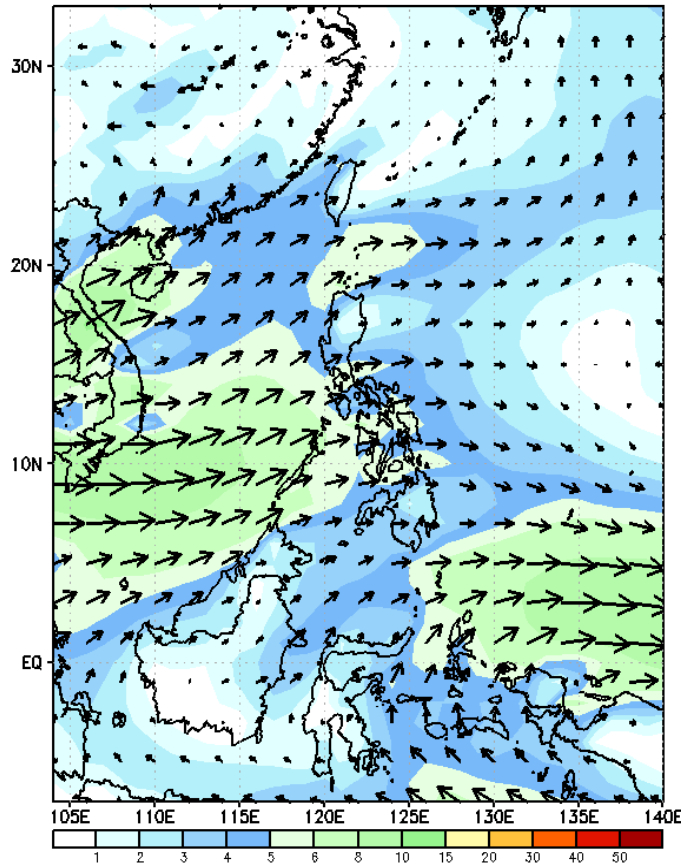


Low probability of rainfall to exceed 200mm in most parts of the country during the forecast period.

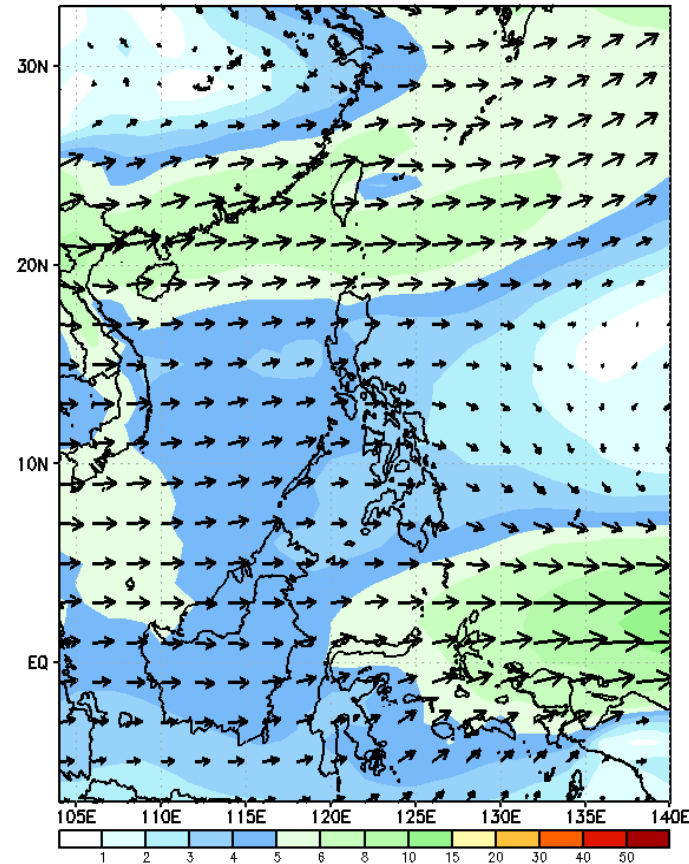
GEFS Week-2 Forecasts: Wind Forecast

Week 2: May 19-25, 2023

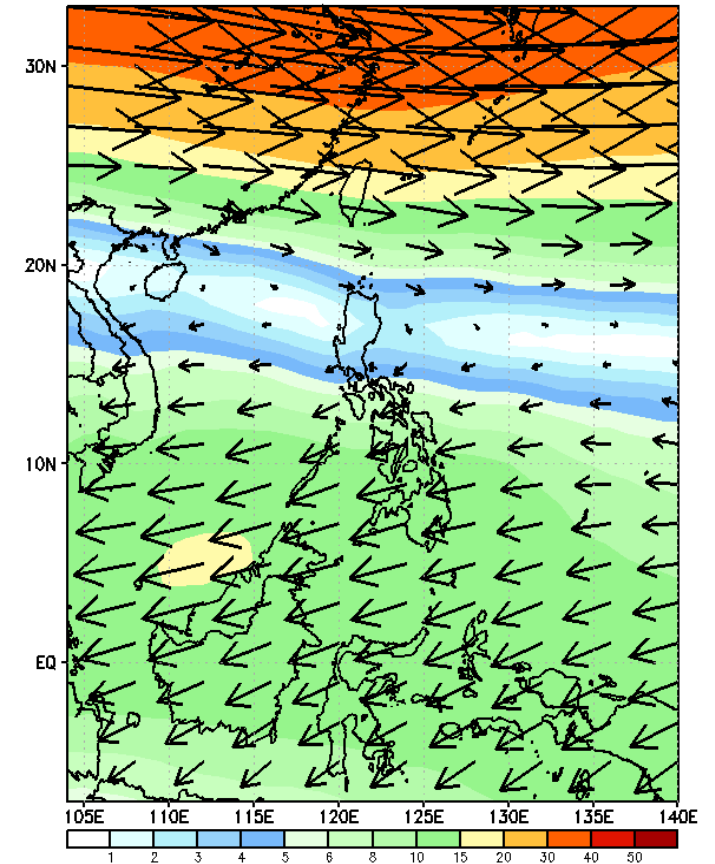
GEFS Week-2 850-hPa Wind Total
Valid: 20230519 - 20230525



GEFS Week-2 700-hPa Wind Total
Valid: 20230519 - 20230525

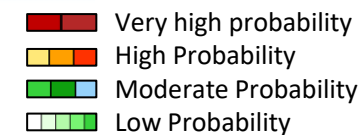


GEFS Week-2 200-hPa Wind Total
Valid: 20230519 - 20230525



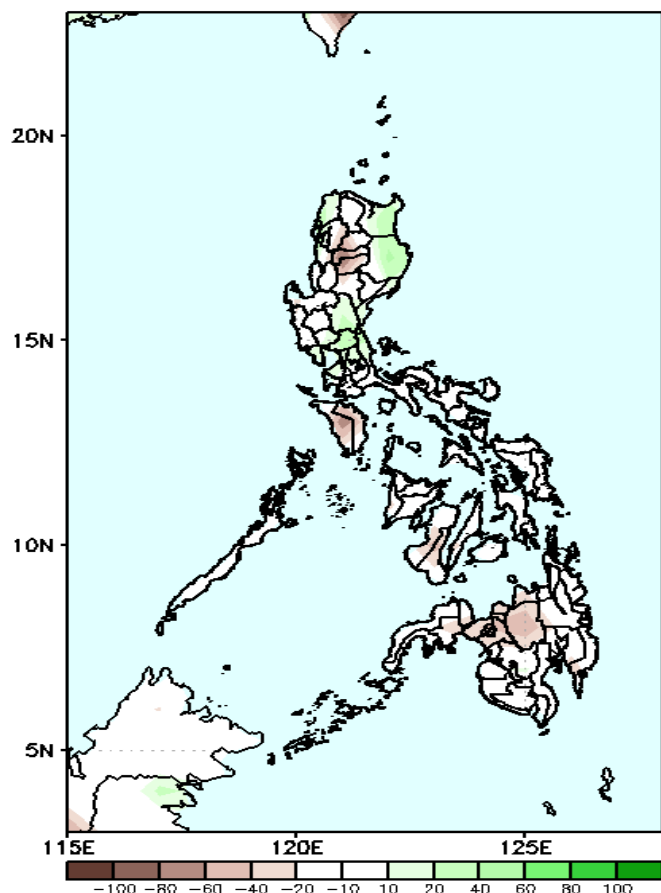
Weak Westerly to southwesterly wind flow is forecasted to affect the western sections of the country.

Precipitation Anomaly and Exceedance Probability > 25/50 mm



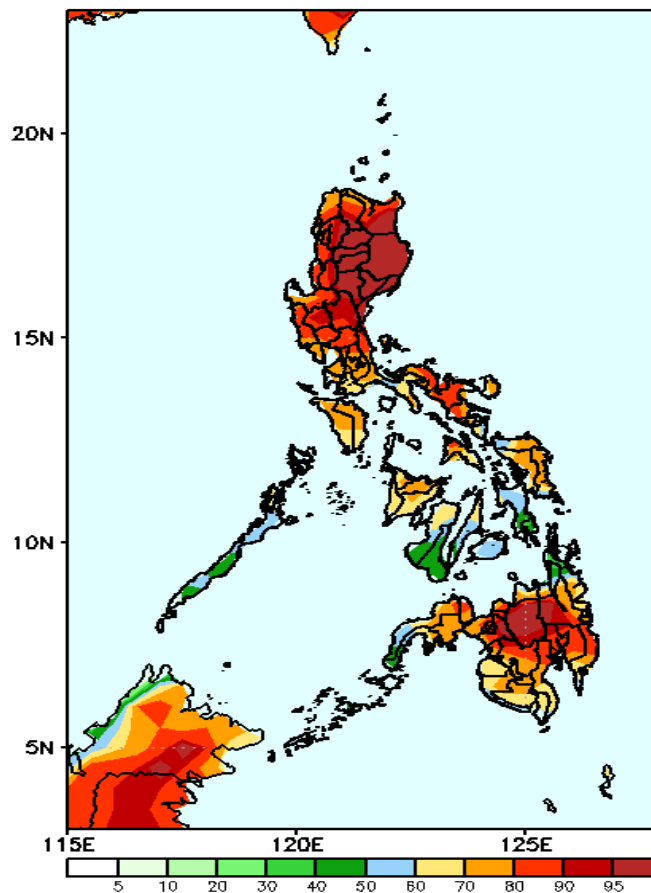
Week 2: May 19-25, 2023

GEFS Week-2 Precip Anomaly
Valid: 20230519 - 20230525



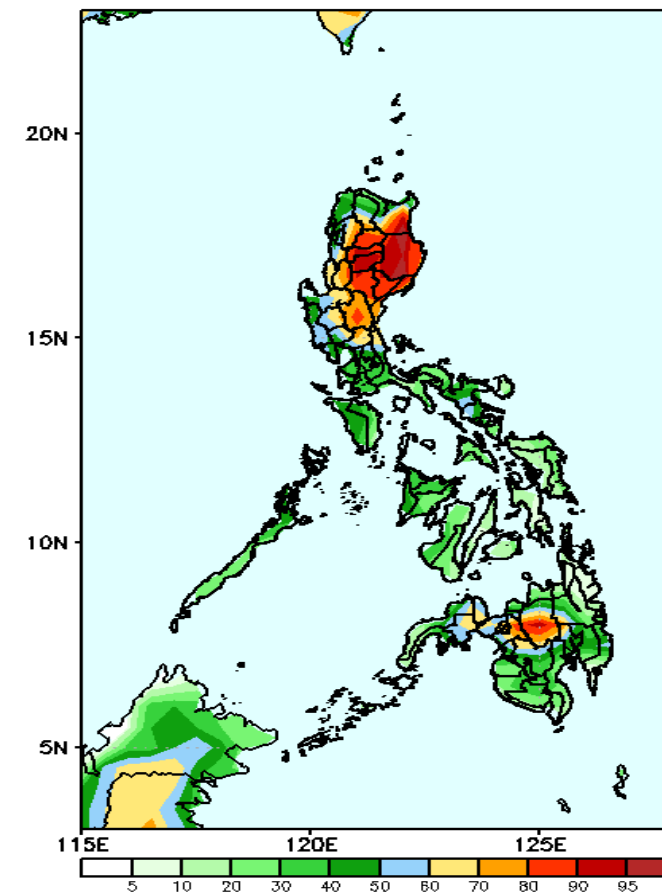
Rainfall deficit of 40-80mm is expected in most parts of the country except Cagayan, Isabela and some areas in Central Luzon where 20-50mm increase of rainfall will be likely during the forecast period.

GEFS Week-2 Exceedance Prob. > 25mm
Valid: 20230519 - 20230525



High to a very high probability to exceed 25mm of rainfall in Northern Mindanao, SOCCSKSARGEN, Davao Region, Zamboanga Sibugay, Zamboanga del Norte, Agusan del Sur, and most parts of Luzon except Palawan; moderate to high likelihood over the rest of the country.

GEFS Week-2 Exceedance Prob. > 50mm
Valid: 20230519 - 20230525



Moderate to high probability to exceed 50mm of rainfall over most parts of northern and Central Luzon and Bukidnon while low to moderate likelihood over the rest of the country.

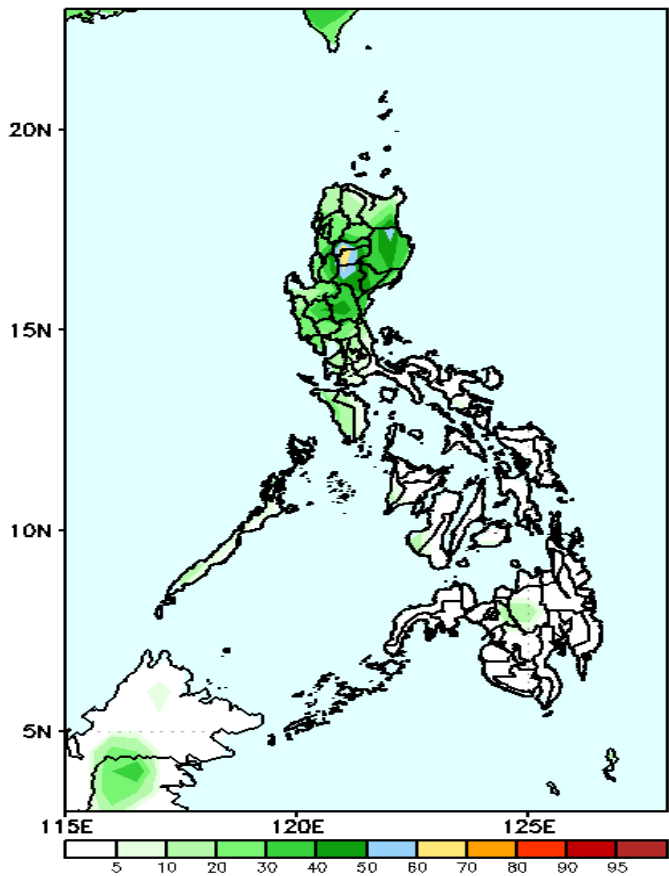
ong
ASA



Exceedance Probability > 100/150/200 mm

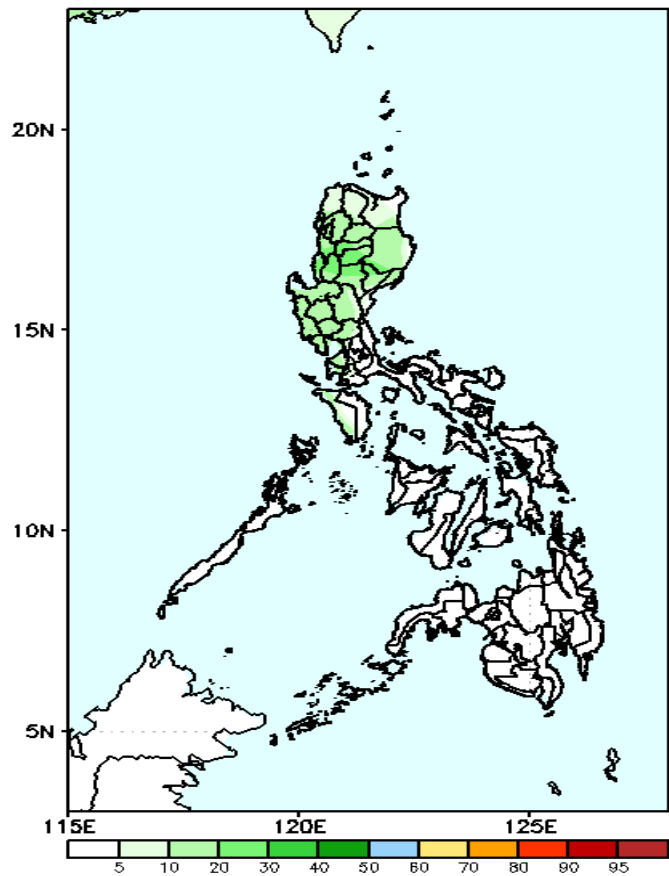
Week 2: May 19-25, 2023

GEFS Week-2 Exceedance Prob. > 100mm
Valid: 20230519 – 20230525



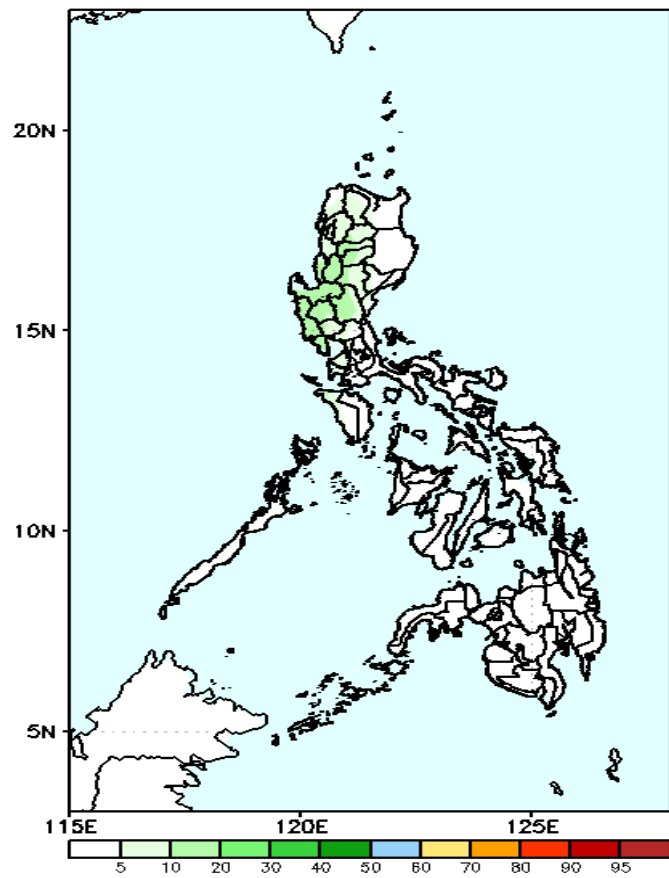
Low to moderate probability to exceed 100mm of rainfall in portions of CAR while low probability across the rest of the country.

GEFS Week-2 Exceedance Prob. > 150mm
Valid: 20230519 – 20230525



Low probability of rainfall to exceed 150mm in most parts of the country during the forecast period.

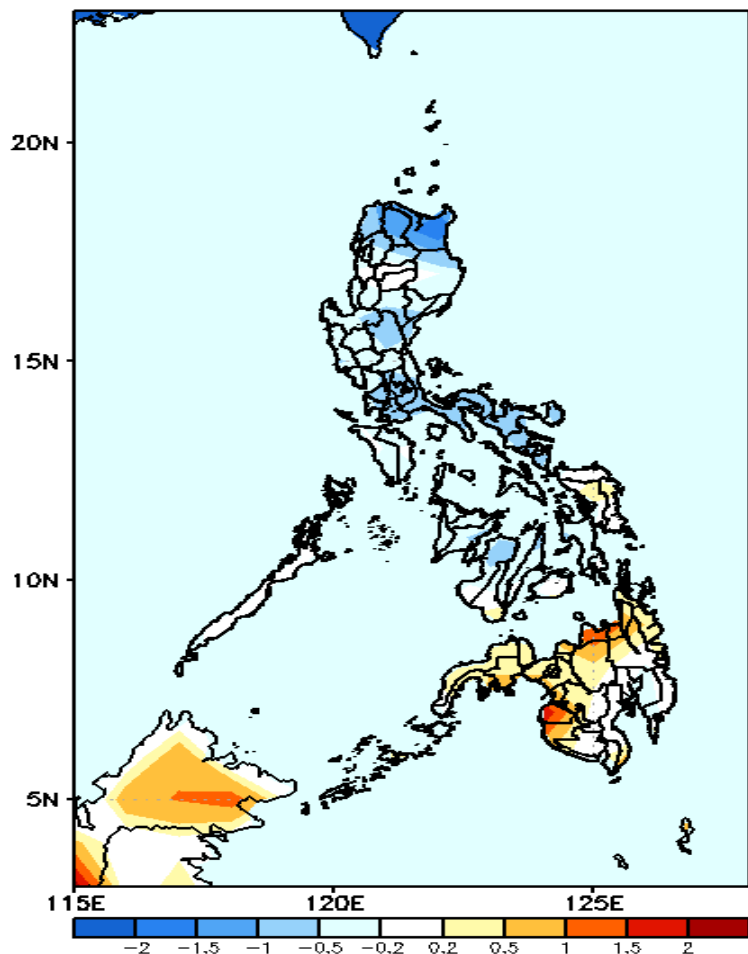
GEFS Week-2 Exceedance Prob. > 200mm
Valid: 20230519 – 20230525



Low probability of rainfall to exceed 200mm in most parts of the country during the forecast period.

GEFS Week-1 & 2 Forecasts: T2m Anomaly

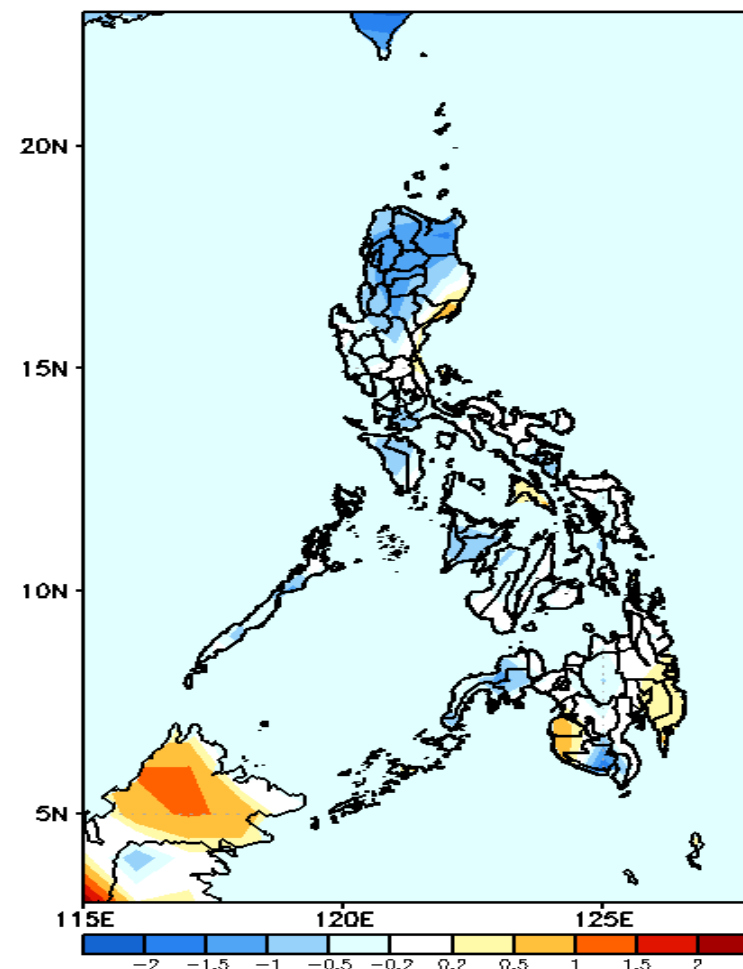
GEFS Week-1 T2m Anomaly
Valid: 20230512 – 20230518



2m Temperature Week 1: May 12-18, 2023

Cooler than average surface air temperature will likely experience in Apayao and Cagayan; average to slightly cooler for the rest of Luzon and most parts of Visayas and southern Mindanao while slightly warmer to warmer than average surface air temperature for the rest of Mindanao during the forecast period.

GEFS Week-2 T2m Anomaly
Valid: 20230519 – 20230525



2m Temperature Week 2: May 19-25, 2023

Cooler than average surface air temperature will likely experience in northern Luzon; average to slightly cooler for the rest of the country except in Maguindanao & Sultan Kudarat were slightly warmer than average temperature will likely have during the forecast period.